

Validating Digital Certificates in Windows

All digital certificates installed on the system appears in Microsoft Store.

1. How to Access Microsoft Store

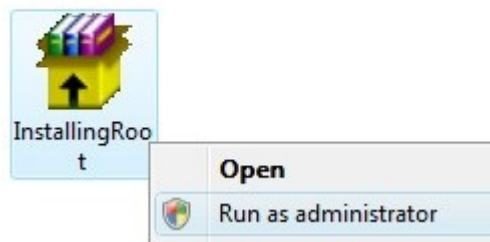
- start Internet Explorer
- go to *Tools* menu – *Internet Options* – *Content* tab – *Certificates* button
- on *Certificates* window your personal certificates appears in *Personal* tab.
- The Root certificates appears in *Trusted Root Certification Authorities* tab.

If you obtain your digital certificate from [signfiles.com](http://www.signfiles.com), the Root Certificate must be imported in Microsoft Store.

If you want to validate Adobe PDF digital signatures, read this document:
<http://www.signfiles.com/manuals/ValidatingDigitalSignaturesInAdobe.pdf>

To import the Secure Soft Root Certificate in Microsoft Store use the following methods:

1. Run this script using Administrator rights:
<http://www.signfiles.com/certs/InstallingRoot.exe>



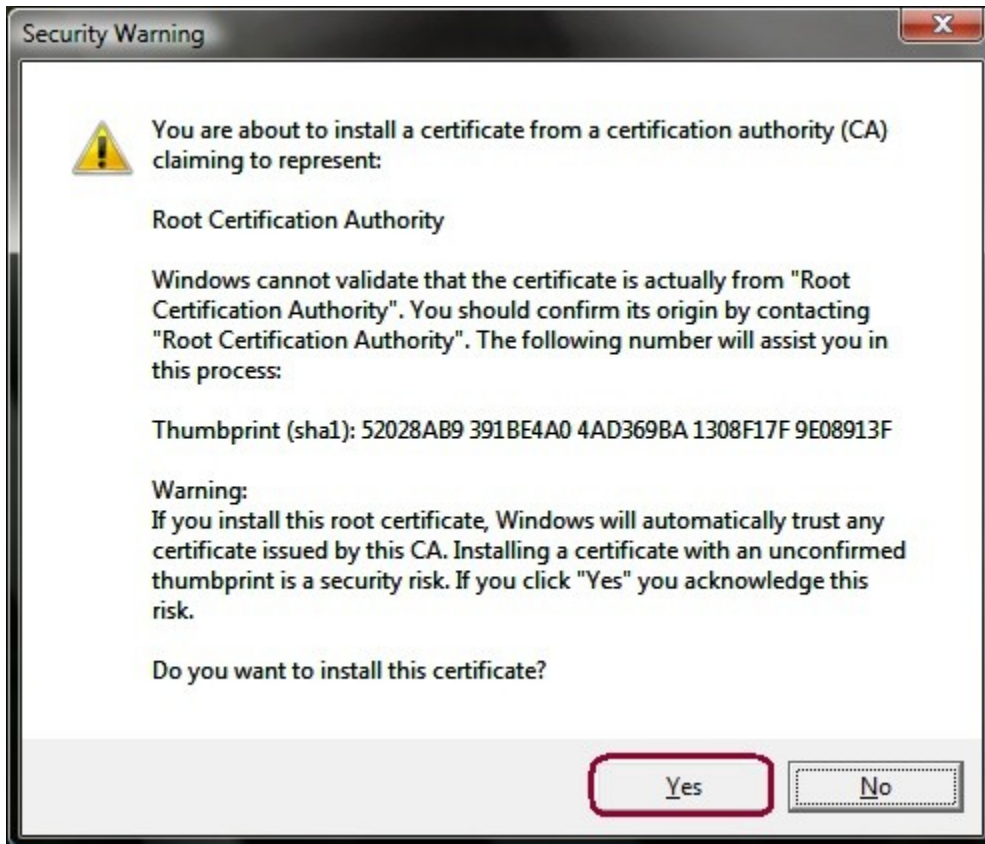
Click *Run, Install, OK*.

2. Download the Root Certificate available here:
<http://www.signfiles.com/certs/RootSecureSoftPrivateCA.cer> and manually install it in Microsoft Store - *Trusted Root Certification Authorities*. See the section below how to do that (4. *Import the Root Certificate in Microsoft Store*).

2. Install a PFX file on your system

If you already have a PFX digital certificate and you want to be validated by your system follow these steps:

- double click the PFX file (just press *Next* without change anything)
- enter the PFX protection password
- press Yes when the message below appears.



3. Export the Root Certificate from Microsoft Store

- Go to Microsoft Store (see section 1. *How to Access Microsoft Store*)
- Select *Trusted Root Certification Authorities* tab
- Select the Root Certificate that you want to export
- Click *Export* button and *Next*
- Select the path and filename for your exported certificate
- Click *Finish*.

The Root Certificate is exported as .cer file. This file can be imported on the computers where you want to validate your certificate.

Note that if you digitally sign a file or send a digitally sign an email message to a computer that not have the Root Certificate installed, an warning message can appear.

If you digitally sign a PDF file and want to validate Adobe PDF digital signatures, read this document:

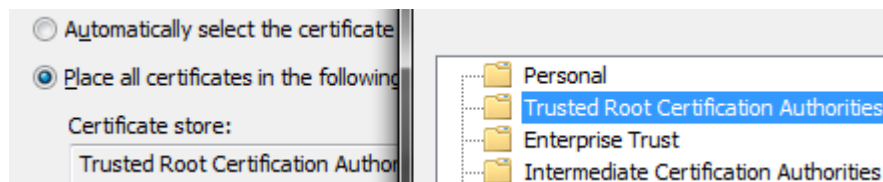
<http://www.signfiles.com/manuals/ValidatingDigitalSignaturesInAdobe.pdf>

4. Import the Root Certificate in Microsoft Store

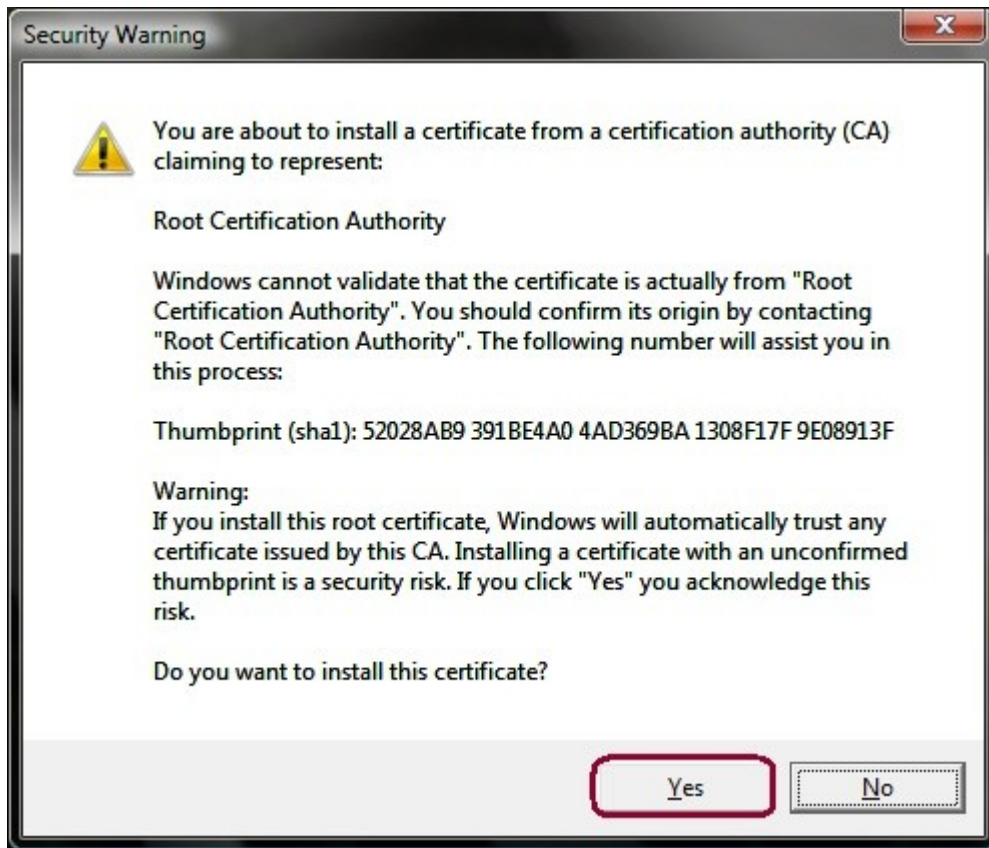
- Copy the exported .cer file obtained above (3. *Export the Root Certificate from Microsoft Store*) on the target computer
- Right click on the imported .cer file and select *Install Certificate*



- Click *Next* and select *Place all certificates in the following store*
- Click *Browse* and select *Trusted Root Certification Authorities*



- Click *Finish*
- press Yes when the message below appears.



After the Root Certificate is imported in Microsoft Store, the certificates issued by that Root Certification Authority will be considered valid on the machine where the Root Certificate was imported.

